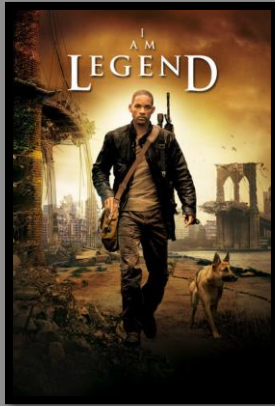


THE CAREER AUTHOR



Bonus Episode 1 // *I Am Legend* (2007)



Years after a plague kills most of humanity and transforms the rest into monsters, the sole survivor in New York City struggles valiantly to find a cure.

Genre: Post-Apocalyptic

<http://www.imdb.com/title/tt0480249/>

Progressive Complication (1:26:00) - The dark seekers are swarming the house and have broken into the lab. Neville realizes there is no way out alive (turning point).

Crisis (1:28:00) - Does Neville try fighting the dark seekers and almost certainly die OR does he sacrifice himself to save Anna and Ethan who can escape with the cure?

IRRECONCILABLE GOOD

Inciting Incident (46:00) - Fred is standing outside on the street.

Climax (1:29:43) - Neville decides to blow up the lab (with Anna and Ethan in a safe space), killing the dark seekers and himself.

Resolution (1:31:00) - Anna and Ethan arrive at the sanctuary in Vermont with Neville's cure.

"I can provide food, I can provide shelter, I can provide security. If there's anybody out there... anybody... please. You are not alone."

THE THREE ACTS

Act I

*Movie "hooks" the viewer at 11:10 when Neville's watch alarm sounds, showing us that there is an intelligent, unseen threat that is coming with the darkness and something Neville must face every night.

Act II - Aprox. 40% mark

Begins around 40:00 when Neville is video recording a report, telling us that any semblance of "human behavior" has left the mutants, propelling us into what we can feel will be an inevitable confrontation. The ALL IS LOST moment is the last beat in the Middle Build (1:00:00) when Neville is begging the mannequin in the video store to say hello to him.

Act III - Aprox. 60% mark

Begins around 1:00:02 when Anna (unknown person in the scene) arrives at the pier to save Neville from his suicidal attack on the mutants after Sam's death.

The Protagonist -
Robert Neville

Wants to?

Find a cure to save
humanity.

Needs?

To be part of a community,
companionship.



The Antagonist – The
“Dark Seekers”

Wants to?

Get his girlfriend back.

Needs?

Exact revenge on Neville.



CHARACTER ARCHETYPES

The Mentor - Bob Marley and his message about "infecting" the world with positivity and love.

Threshold Guardian - Anna when she tries to convince Neville to leave New York, forsake the cure, and come to the sanctuary.

Herald - Neville's continuing failed experiments at developing a cure.

Shape Shifter - None

Shadow - The lead Dark Seeker serves as the primary focus of the antagonism, creating an almost personal vendetta with Neville.

The Ally - Sam, and later Anna, keep Neville from killing himself while helping him in his quest for the cure.

The Trickster - At times, Sam serves as the trickster with more light-hearted moments in the grim story.

*More on Campbell's archetypes - <https://mythcreants.com/blog/the-eight-character-archetypes-of-the-heros-journey/>

DOES THE MOVIE WORK? WHY OR WHY NOT?

J: Absolutely! The filmmakers seemed to really understand the genre which allowed them to play with certain conventions while honoring others which is a great lesson for writing to market. *I Am Legend* creates an immersive, emotional experience for the viewer even after multiple viewings. In general, the movie hits all of the expected elements of traditional storytelling. Loved it!

Zach: Yes! Especially as a fan of post-apocalyptic stories, the movie hits everything I look for. They do a great job of showing what Robert's everyday life looks like, living on his own in a barren wasteland. And I love how they handled his mental state. While the film does take a while to take off and get into the meat of the plot, I was never bored, and the character build-up paid off in the end, as Robert's death resonated with me. It's a very well told story, and I learned a lot by analyzing it from an author's perspective.